



Rockmills Steel Products ©

(516) 829-8555

Info@rockmillsboilers.com

Over 50 years of excellence
(718) 366-8300

Specifications



Series MP
Horse Power:
Efficiency

MP-900
900 H.P.
Up to 85%

Gross Output

Steam	125550.0	SQ.FT
Steam	30127.5	MBH
Steam (per hr from & at 212 Deg F)	31050	LBS

Net Rating

SQ.Ft of Steam	100440.0	SQ.FT
MBH of Steam	24102	MBH

Firing Rate

Light Oil (140000 BTU/Gal)	262.4	GPH
Heavy Oil (150000 BTU GAL)	244.9	GPH
GAS	36740.9	MBH

General Information

Heating Surface	4500	SQ.FT
Furnace Volume	470.73	CU. FT
Safety Valve Relieving Capacity - Required Steam (Min)	36000	LB/HR
Steam Outlet Pipe Size	12	IN
Dry Boiler Weight (Approximate)	63,370	LB
Operating Weight (Approximate)	104,345	LB



Rockmills Steel Products ©

(516) 829-8555

Info@rockmillsboilers.com

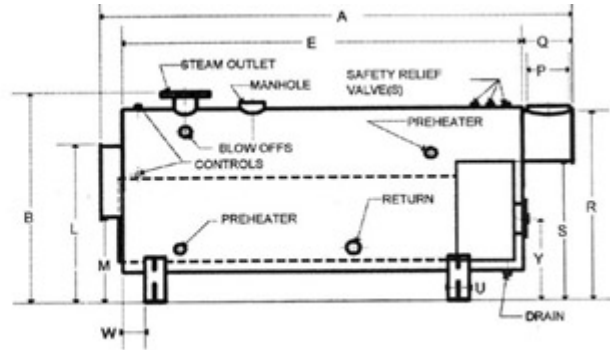
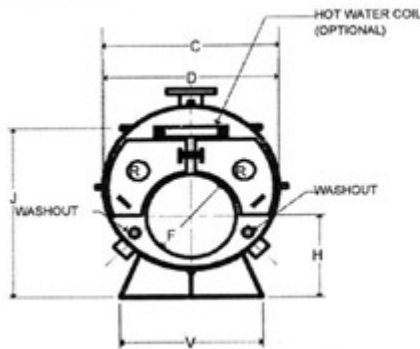
Over 50 years of excellence
(718) 366-8300

Dimensions



Series MP
Horse Power:
Efficiency

MP-900
900 H.P.
Up to 85%



** As per ASME code all boilers with a diameter greater than 60" will be equipped with 12"x16" manhole

Dimensions

A	Overall Length	27-6	FT-IN.
B	Overall Height (To Steam Outlet)	134	IN.
C	Shell Diameter (Over jacket 2" thick)	118	IN.
D	Shell Diameter	114	IN.
E	Shell Length	22-10	FT-IN.
F	Furnace Diameter	58	IN.
G	Furnace Length	238	IN.
H	Height-Centerline of Furnace	49	IN.
J	Normal Water Line	105.5	IN.
K	Depth-Front Reversing Chamber	12	IN.
L	Height-Front Rev. Chamber Top	103.625	IN.
M	Height-Front Rev. Chamber Bottom	42	IN.
N	Depth-Rear Combustion Chamber	30	IN.
P	Vent Outlet Diameter	38	IN.
Q	Depth-Smoke Box	41	IN.
R	Height-Smoke hood Top	124	IN.
S	Height-Smoke hood Bottom	87.25	IN.
T	Tube Pull	22-10	FT-IN.
U	Saddle Width	12	IN.
V	Saddle Length	102	IN.
W	Position-Front Saddle	12	IN.
X	Position-Rear Saddle	30	IN.
Y	Centerline of Access Door	36	IN.
Z	Manhole	12 x 16	IN.
	Handhole	3 x 4	IN.