



Rockmills Steel Products ©

(516) 829-8555

Info@rockmillsboilers.com

Over 50 years of excellence
(718) 366-8300

Specifications



Series MP
Horse Power:
Efficiency

MP-90
90 H.P.
Up to 85%

Gross Output

| | | |
|--|---------|--------------|
| Steam | 12555.0 | SQ.FT |
| Steam | 3012.8 | MBH |
| Steam (per hr from & at 212 Deg F) | 3105 | LBS |

Net Rating

| | | |
|-----------------------|---------|--------------|
| SQ.Ft of Steam | 10044.0 | SQ.FT |
| MBH of Steam | 2410.2 | MBH |

Firing Rate

| | | |
|--------------------------------------|--------|------------|
| Light Oil (140000 BTU/Gal) | 26.2 | GPH |
| Heavy Oil (150000 BTU GAL) | 24.5 | GPH |
| GAS | 3674.1 | MBH |

General Information

| | | |
|--|--------|---------------|
| Heating Surface | 450 | SQ.FT |
| Furnace Volume | 64.54 | CU. FT |
| Safety Valve Relieving Capacity - Required Steam (Min) | 3600 | LB/HR |
| Steam Outlet Pipe Size | 8 | IN |
| Dry Boiler Weight (Approximate) | 10,150 | LB |
| Operating Weight (Approximate) | 16,739 | LB |



Rockmills Steel Products ©

(516) 829-8555

Info@rockmillsboilers.com

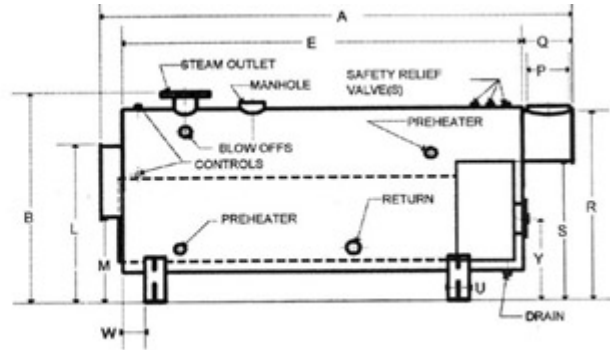
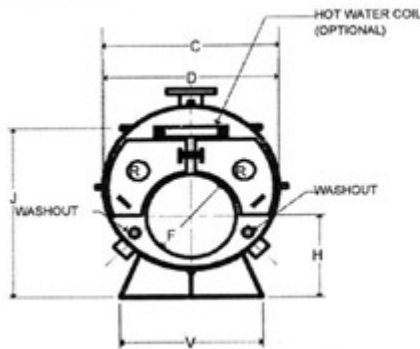
Over 50 years of excellence
(718) 366-8300

Dimensions



Series MP
Horse Power:
Efficiency

MP-90
90 H.P.
Up to 85%



** As per ASME code all boilers with a diameter greater than 60" will be equipped with 12"x16" manhole

Dimensions

| | | | |
|----------|---------------------------------------|---------|--------|
| A | Overall Length | 11-5 | FT-IN. |
| B | Overall Height (To Steam Outlet) | 86 | IN. |
| C | Shell Diameter (Over jacket 2" thick) | 70.75 | IN. |
| D | Shell Diameter | 66.75 | IN. |
| E | Shell Length | 9-1 | FT-IN. |
| F | Furnace Diameter | 34 | IN. |
| G | Furnace Length | 84 | IN. |
| H | Height-Centerline of Furnace | 34.5 | IN. |
| J | Normal Water Line | 68.25 | IN. |
| K | Depth-Front Reversing Chamber | 8 | IN. |
| L | Height-Front Rev. Chamber Top | 66 | IN. |
| M | Height-Front Rev. Chamber Bottom | 34.75 | IN. |
| N | Depth-Rear Combustion Chamber | 18 | IN. |
| P | Vent Outlet Diameter | 16 | IN. |
| Q | Depth-Smoke Box | 19 | IN. |
| R | Height-Smoke hood Top | 76.875 | IN. |
| S | Height-Smoke hood Bottom | 54.75 | IN. |
| T | Tube Pull | 9-1 | FT-IN. |
| U | Saddle Width | 8 | IN. |
| V | Saddle Length | 54 | IN. |
| W | Position-Front Saddle | 8 | IN. |
| X | Position-Rear Saddle | 21 | IN. |
| Y | Centerline of Access Door | 27.75 | IN. |
| Z | Manhole | 12 x 16 | IN. |
| | Handhole | 3 x 4 | IN. |