



Rockmills Steel Products ©

(516) 829-8555

Info@rockmillsboilers.com

Over 50 years of excellence
(718) 366-8300

Specifications



Series MP
Horse Power:
Efficiency

MP-70
70 H.P.
Up to 85%

Gross Output

Steam	9765	SQ.FT
Steam	2343.3	MBH
Steam (per hr from & at 212 Deg F)	2415	LBS

Net Rating

SQ.Ft of Steam	7812	SQ.FT
MBH of Steam	1874.6	MBH

Firing Rate

Light Oil (140000 BTU/Gal)	20.4	GPH
Heavy Oil (150000 BTU GAL)	19.1	GPH
GAS	2857.6	MBH

General Information

Heating Surface	350	SQ.FT
Furnace Volume	40.92	CU. FT
Safety Valve Relieving Capacity - Required Steam (Min)	2800	LB/HR
Steam Outlet Pipe Size	6	IN
Dry Boiler Weight (Approximate)	8,430	LB
Operating Weight (Approximate)	13,395	LB



Rockmills Steel Products ©

(516) 829-8555

Info@rockmillsboilers.com

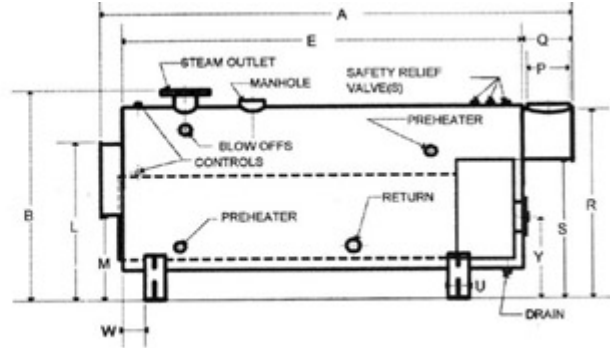
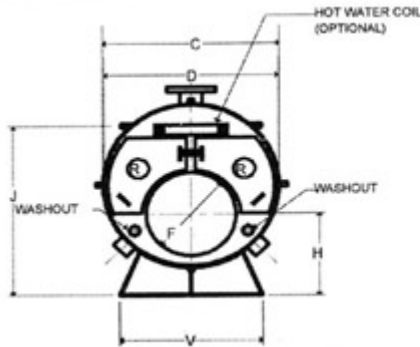
Over 50 years of excellence
(718) 366-8300

Dimensions



Series MP
Horse Power:
Efficiency

MP-70
70 H.P.
Up to 85%



** As per ASME code all boilers with a diameter greater than 60" will be equipped with 12"x16" manhole

Dimensions

A	Overall Length	11-5	FT-IN.
B	Overall Height (To Steam Outlet)	73.5	IN.
C	Shell Diameter (Over jacket 2" thick)	58	IN.
D	Shell Diameter	54	IN.
E	Shell Length	9-3	FT-IN.
F	Furnace Diameter	27	IN.
G	Furnace Length	86	IN.
H	Height-Centerline of Furnace	30.25	IN.
J	Normal Water Line	57.5	IN.
K	Depth-Front Reversing Chamber	8	IN.
L	Height-Front Rev. Chamber Top	55.25	IN.
M	Height-Front Rev. Chamber Bottom	32.75	IN.
N	Depth-Rear Combustion Chamber	18	IN.
P	Vent Outlet Diameter	14	IN.
Q	Depth-Smoke Box	17	IN.
R	Height-Smoke hood Top	63.5	IN.
S	Height-Smoke hood Bottom	45.5	IN.
T	Tube Pull	9-3	FT-IN.
U	Saddle Width	8	IN.
V	Saddle Length	42	IN.
W	Position-Front Saddle	8	IN.
X	Position-Rear Saddle	21	IN.
Y	Centerline of Access Door	28.5	IN.
Z	Manhole	-	IN.
	Handhole	-	IN.