



Rockmills Steel Products ©

(516) 829-8555

Info@rockmillsboilers.com

Over 50 years of excellence
(718) 366-8300

Specifications



Series MP
Horse Power:
Efficiency

MP-60
60 H.P.
Up to 85%

Gross Output

| | | |
|--|--------|--------------|
| Steam | 8370 | SQ.FT |
| Steam | 2008.5 | MBH |
| Steam (per hr from & at 212 Deg F) | 2070 | LBS |

Net Rating

| | | |
|-----------------------|--------|--------------|
| SQ.Ft of Steam | 6696 | SQ.FT |
| MBH of Steam | 1606.8 | MBH |

Firing Rate

| | | |
|--------------------------------------|--------|------------|
| Light Oil (140000 BTU/Gal) | 17.5 | GPH |
| Heavy Oil (150000 BTU GAL) | 16.3 | GPH |
| GAS | 2449.4 | MBH |

General Information

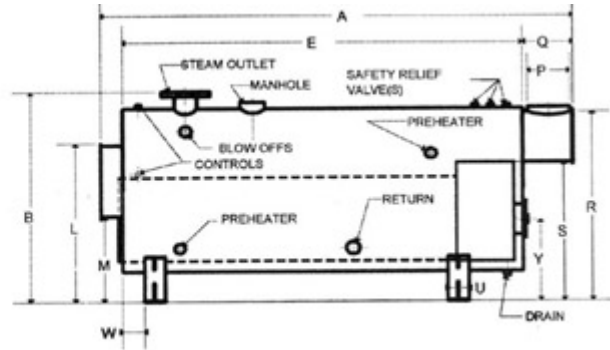
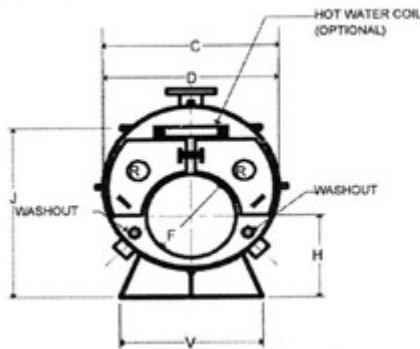
| | | |
|--|--------|---------------|
| Heating Surface | 300 | SQ.FT |
| Furnace Volume | 36.28 | CU. FT |
| Safety Valve Relieving Capacity - Required Steam (Min) | 2400 | LB/HR |
| Steam Outlet Pipe Size | 6 | IN |
| Dry Boiler Weight (Approximate) | 7,550 | LB |
| Operating Weight (Approximate) | 11,740 | LB |

Dimensions



Series MP
 Horse Power:
 Efficiency

MP-60
 60 H.P.
 Up to 85%



** As per ASME code all boilers with a diameter greater than 60" will be equipped with 12"x16" manhole

Dimensions

| | | | |
|----------|---------------------------------------|-------|--------|
| A | Overall Length | 10-3 | FT-IN. |
| B | Overall Height (To Steam Outlet) | 73.5 | IN. |
| C | Shell Diameter (Over jacket 2" thick) | 58 | IN. |
| D | Shell Diameter | 54 | IN. |
| E | Shell Length | 8-1 | FT-IN. |
| F | Furnace Diameter | 27 | IN. |
| G | Furnace Length | 72 | IN. |
| H | Height-Centerline of Furnace | 30.25 | IN. |
| J | Normal Water Line | 57.5 | IN. |
| K | Depth-Front Reversing Chamber | 8 | IN. |
| L | Height-Front Rev. Chamber Top | 55.25 | IN. |
| M | Height-Front Rev. Chamber Bottom | 32.75 | IN. |
| N | Depth-Rear Combustion Chamber | 18 | IN. |
| P | Vent Outlet Diameter | 14 | IN. |
| Q | Depth-Smoke Box | 17 | IN. |
| R | Height-Smoke hood Top | 63.5 | IN. |
| S | Height-Smoke hood Bottom | 45.5 | IN. |
| T | Tube Pull | 8-1 | FT-IN. |
| U | Saddle Width | 8 | IN. |
| V | Saddle Length | 42 | IN. |
| W | Position-Front Saddle | 8 | IN. |
| X | Position-Rear Saddle | 21 | IN. |
| Y | Centerline of Access Door | 28.5 | IN. |
| Z | Manhole | - | IN. |
| | Handhole | - | IN. |