



Rockmills Steel Products ©

(516) 829-8555

Info@rockmillsboilers.com

Over 50 years of excellence
(718) 366-8300

Specifications



Series MP
Horse Power:
Efficiency

MP-500
500 H.P.
Up to 85%

Gross Output

Steam	69750.0	SQ.FT
Steam	16737.5	MBH
Steam (per hr from & at 212 Deg F)	17250	LBS

Net Rating

SQ.Ft of Steam	55800.0	SQ.FT
MBH of Steam	13390	MBH

Firing Rate

Light Oil (140000 BTU/Gal)	145.8	GPH
Heavy Oil (150000 BTU GAL)	136.1	GPH
GAS	20411.6	MBH

General Information

Heating Surface	2500	SQ.FT
Furnace Volume	263	CU. FT
Safety Valve Relieving Capacity - Required Steam (Min)	20000	LB/HR
Steam Outlet Pipe Size	10	IN
Dry Boiler Weight (Approximate)	45,800	LB
Operating Weight (Approximate)	66,131	LB



Rockmills Steel Products ©

(516) 829-8555

Info@rockmillsboilers.com

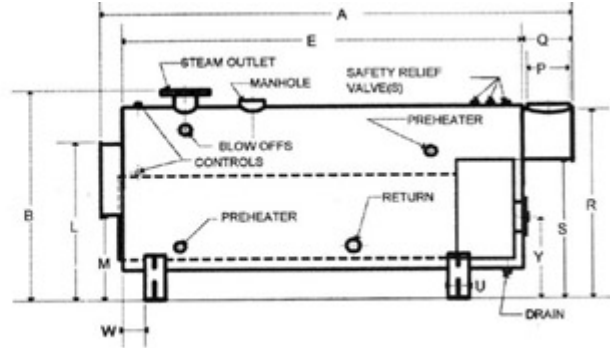
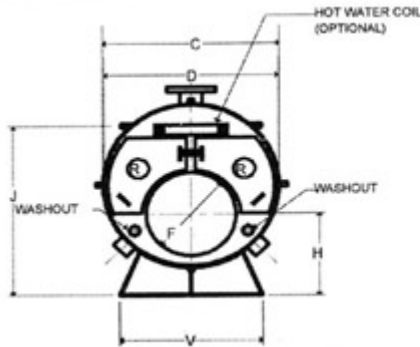
Over 50 years of excellence
(718) 366-8300

Dimensions



Series MP
Horse Power:
Efficiency

MP-500
500 H.P.
Up to 85%



** As per ASME code all boilers with a diameter greater than 60" will be equipped with 12"x16" manhole

Dimensions

A	Overall Length	19-7	FT-IN.
B	Overall Height (To Steam Outlet)	122	IN.
C	Shell Diameter (Over jacket 2" thick)	106.875	IN.
D	Shell Diameter	102.875	IN.
E	Shell Length	15-4	FT-IN.
F	Furnace Diameter	50	IN.
G	Furnace Length	154	IN.
H	Height-Centerline of Furnace	46	IN.
J	Normal Water Line	96.75	IN.
K	Depth-Front Reversing Chamber	12	IN.
L	Height-Front Rev. Chamber Top	94.375	IN.
M	Height-Front Rev. Chamber Bottom	45	IN.
N	Depth-Rear Combustion Chamber	24	IN.
P	Vent Outlet Diameter	33	IN.
Q	Depth-Smoke Box	36	IN.
R	Height-Smoke hood Top	113.75	IN.
S	Height-Smoke hood Bottom	79.125	IN.
T	Tube Pull	15-4	FT-IN.
U	Saddle Width	12	IN.
V	Saddle Length	90	IN.
W	Position-Front Saddle	12	IN.
X	Position-Rear Saddle	24	IN.
Y	Centerline of Access Door	36	IN.
Z	Manhole	12 x 16	IN.
	Handhole	3 x 4	IN.