



Rockmills Steel Products ©

(516) 829-8555

Info@rockmillsboilers.com

Over 50 years of excellence
(718) 366-8300

Specifications



Series MP
Horse Power:
Efficiency

MP-30
30 H.P.
Up to 85%

Gross Output

Steam	4185.0	SQ.FT
Steam	1004.3	MBH
Steam (per hr from & at 212 Deg F)	1035.0	LBS

Net Rating

SQ.Ft of Steam	3348.0	SQ.FT
MBH of Steam	803.4	MBH

Firing Rate

Light Oil (140000 BTU/Gal)	8.7	GPH
Heavy Oil (150000 BTU GAL)	8.2	GPH
GAS	1224.7	MBH

General Information

Heating Surface	150	SQ.FT
Furnace Volume	19.48	CU. FT
Safety Valve Relieving Capacity - Required Steam (Min)	1200	LB/HR
Steam Outlet Pipe Size	6	IN
Dry Boiler Weight (Approximate)	4,850	LB
Operating Weight (Approximate)	7,243	LB



Rockmills Steel Products ©

(516) 829-8555

Info@rockmillsboilers.com

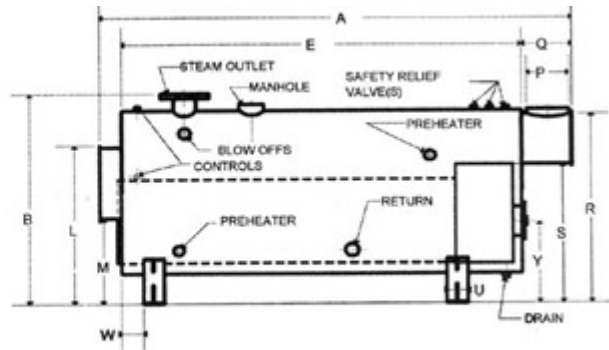
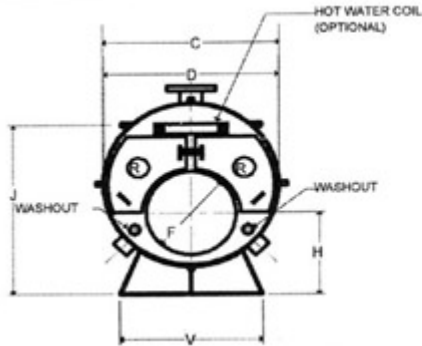
Over 50 years of excellence
(718) 366-8300

Dimensions



Series MP
Horse Power:
Efficiency

MP-30
30 H.P.
Up to 85%



** As per ASME code all boilers with a diameter greater than 60" will be equipped with 12"x16" manhole

Dimensions

A	Overall Length	7-1 1/4	FT-IN.
B	Overall Height (To Steam Outlet)	67.875	IN.
C	Shell Diameter (Over jacket 2" thick)	52.625	IN.
D	Shell Diameter	48.625	IN.
E	Shell Length	5-2 1/4	FT-IN.
F	Furnace Diameter	24	IN.
G	Furnace Length	39.75	IN.
H	Height-Centerline of Furnace	26.875	IN.
J	Normal Water Line	52.125	IN.
K	Depth-Front Reversing Chamber	8	IN.
L	Height-Front Rev. Chamber Top	49	IN.
M	Height-Front Rev. Chamber Bottom	25.5	IN.
N	Depth-Rear Combustion Chamber	16.5	IN.
P	Vent Outlet Diameter	12	IN.
Q	Depth-Smoke Box	15	IN.
R	Height-Smoke hood Top	58	IN.
S	Height-Smoke hood Bottom	41.5625	IN.
T	Tube Pull	5-2 1/4	FT-IN.
U	Saddle Width	8	IN.
V	Saddle Length	36	IN.
W	Position-Front Saddle	8	IN.
X	Position-Rear Saddle	18	IN.
Y	Centerline of Access Door	25.75	IN.
Z	Manhole	-	IN.
	Handhole	-	IN.