



Rockmills Steel Products ©

(516) 829-8555

Info@rockmillsboilers.com

Over 50 years of excellence

(718) 366-8300

Specifications



Series MP
Horse Power:
Efficiency

MP-250
250 H.P.
Up to 85%

Gross Output

Steam	34875.0	SQ.FT
Steam	8368.8	MBH
Steam (per hr from & at 212 Deg F)	8625	LBS

Net Rating

SQ.Ft of Steam	27900.0	SQ.FT
MBH of Steam	6695	MBH

Firing Rate

Light Oil (140000 BTU/Gal)	72.9	GPH
Heavy Oil (150000 BTU GAL)	68.0	GPH
GAS	10205.8	MBH

General Information

Heating Surface	1250	SQ.FT
Furnace Volume	146.91	CU. FT
Safety Valve Relieving Capacity - Required Steam (Min)	10000	LB/HR
Steam Outlet Pipe Size	8	IN
Dry Boiler Weight (Approximate)	22,450	LB
Operating Weight (Approximate)	36,095	LB



Rockmills Steel Products ©

(516) 829-8555

Info@rockmillsboilers.com

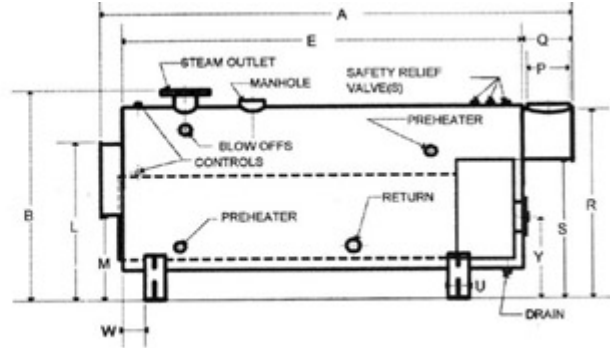
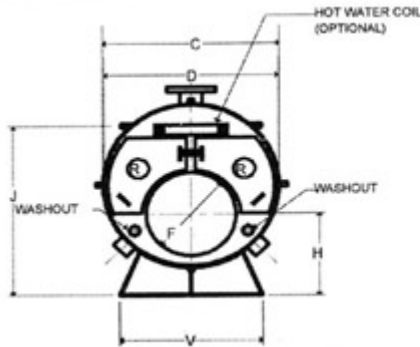
Over 50 years of excellence
(718) 366-8300

Dimensions



Series MP
Horse Power:
Efficiency

MP-250
250 H.P.
Up to 85%



** As per ASME code all boilers with a diameter greater than 60" will be equipped with 12"x16" manhole

Dimensions

A	Overall Length	17-2	FT-IN.
B	Overall Height (To Steam Outlet)	97.5	IN.
C	Shell Diameter (Over jacket 2" thick)	82.25	IN.
D	Shell Diameter	78.25	IN.
E	Shell Length	14-1	FT-IN.
F	Furnace Diameter	40	IN.
G	Furnace Length	132	IN.
H	Height-Centerline of Furnace	37	IN.
J	Normal Water Line	79.75	IN.
K	Depth-Front Reversing Chamber	10	IN.
L	Height-Front Rev. Chamber Top	75.875	IN.
M	Height-Front Rev. Chamber Bottom	35.125	IN.
N	Depth-Rear Combustion Chamber	30	IN.
P	Vent Outlet Diameter	24	IN.
Q	Depth-Smoke Box	27	IN.
R	Height-Smoke hood Top	89	IN.
S	Height-Smoke hood Bottom	64.125	IN.
T	Tube Pull	14-1	FT-IN.
U	Saddle Width	8	IN.
V	Saddle Length	66	IN.
W	Position-Front Saddle	14	IN.
X	Position-Rear Saddle	32	IN.
Y	Centerline of Access Door	29.75	IN.
Z	Manhole	12 x 16	IN.
	Handhole	3 x 4	IN.