



# Rockmills Steel Products ©

(516) 829-8555

Info@rockmillsboilers.com

Over 50 years of excellence  
(718) 366-8300

## Specifications



**Series MP**  
**Horse Power:**  
**Efficiency**

**MP-175**  
**175 H.P.**  
**Up to 85%**

### Gross Output

<b>Steam</b>	24412.5	<b>SQ.FT</b>
<b>Steam</b>	5858.1	<b>MBH</b>
<b>Steam</b> (per hr from & at 212 Deg F)	6037.5	<b>LBS</b>

### Net Rating

<b>SQ.Ft of Steam</b>	19530.0	<b>SQ.FT</b>
<b>MBH of Steam</b>	4686.5	<b>MBH</b>

### Firing Rate

<b>Light Oil</b> (140000 BTU/Gal)	51.0	<b>GPH</b>
<b>Heavy Oil</b> (150000 BTU GAL)	47.6	<b>GPH</b>
<b>GAS</b>	7144.1	<b>MBH</b>

### General Information

<b>Heating Surface</b>	875	<b>SQ.FT</b>
<b>Furnace Volume</b>	111.83	<b>CU. FT</b>
<b>Safety Valve Relieving Capacity -</b> Required Steam (Min)	7000	<b>LB/HR</b>
<b>Steam Outlet Pipe Size</b>	8	<b>IN</b>
<b>Dry Boiler Weight (Approximate)</b>	16,950	<b>LB</b>
<b>Operating Weight (Approximate)</b>	27,179	<b>LB</b>

## Dimensions



**Series MP**  
**Horse Power:**  
**Efficiency**

**MP-175**  
**175 H.P.**  
**Up to 85%**



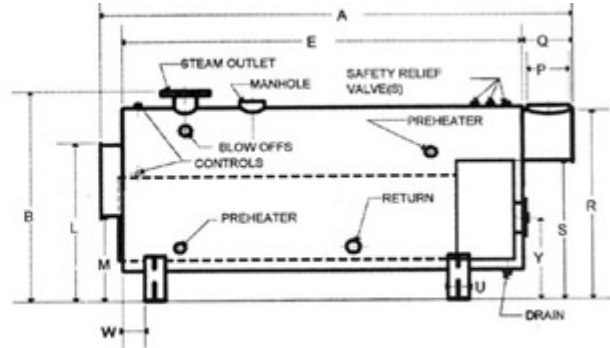
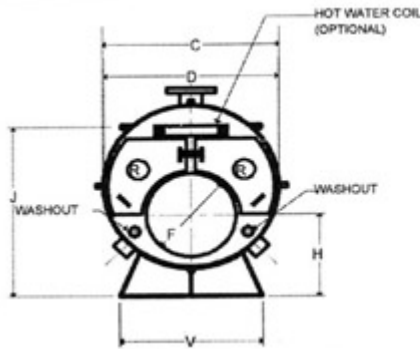
# Rockmills Steel Products ©

Over 50 years of excellence

(516) 829-8555

Info@rockmillsboilers.com

(718) 366-8300



\*\* As per ASME code all boilers with a diameter greater than 60" will be equipped with 12"x16" manhole

## Dimensions

<b>A</b>	Overall Length	14-10	FT-IN.
<b>B</b>	Overall Height (To Steam Outlet)	91.5	IN.
<b>C</b>	Shell Diameter (Over jacket 2" thick)	76.125	IN.
<b>D</b>	Shell Diameter	72.125	FT
<b>E</b>	Shell Length	12-1	FT-IN.
<b>F</b>	Furnace Diameter	40	IN.
<b>G</b>	Furnace Length	120	IN.
<b>H</b>	Height-Centerline of Furnace	36	IN.
<b>J</b>	Normal Water Line	73.5	IN.
<b>K</b>	Depth-Front Reversing Chamber	10	IN.
<b>L</b>	Height-Front Rev. Chamber Top	70.125	IN.
<b>M</b>	Height-Front Rev. Chamber Bottom	32.25	IN.
<b>N</b>	Depth-Rear Combustion Chamber	18	IN.
<b>P</b>	Vent Outlet Diameter	20	IN.
<b>Q</b>	Depth-Smoke Box	23	IN.
<b>R</b>	Height-Smoke hood Top	82.25	IN.
<b>S</b>	Height-Smoke hood Bottom	58.125	IN.
<b>T</b>	Tube Pull	12-1	FT-IN.
<b>U</b>	Saddle Width	8	IN.
<b>V</b>	Saddle Length	60	IN.
<b>W</b>	Position-Front Saddle	14	IN.
<b>X</b>	Position-Rear Saddle	21	IN.
<b>Y</b>	Centerline of Access Door	29.5	IN.
<b>Z</b>	Manhole	12 x 16	IN.
	Handhole	3 x 4	IN.